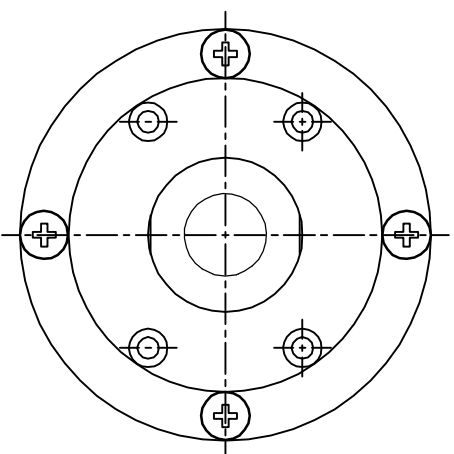
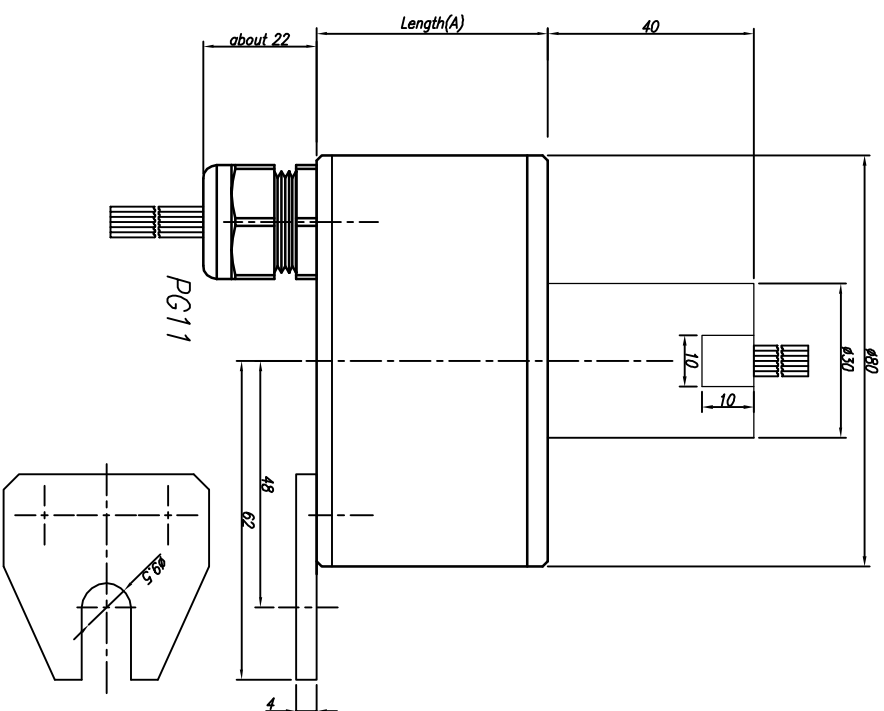


SPECIFICATION	
Number of Circuit	3 amps/circuit (22AWG), 10 amps/2circuit(16AWG)
Operating Speed	100rpm continuous
Lead Lengths	300mm
Voltage	Max. 380VDC/VAC
Current Rating	12 ~ 32 circuit
Contact Material	Gold to Gold
Lead Size/Type	Silver plated copper Type Teflon Insulated
Noise	100milliohms max



VIEW - TOP

NO	WR-S000(A Type)	PART NAME	CHECKED	APPROVE	MATERIAL	QTY	COATING METHOD	REMARK
01			KIM,W.B	KIM,W.B	N : S	A3		
DRAWING		DESIGN	DATE		2013.02.04		PROJECTION	
LEE,Y.S							DRAWING NO.	
							WR-S000-00-A	
TOLERANCE								
0 ~ 10		±0.02		CHAMFER		C = 0.3		
11 ~ 30		±0.05		FILET		R = 0.3		
31 ~ 50		±0.10		ANGLE		40°/20		
51 ~ 100		±0.15		HOLE PITCH		±0.05		
100 ~		±0.20						
도면번호		Port	Length(A)					
WR-S012-00-A		12	62.6					
WR-S024-00-A		24	91.4					
WR-S032-00-A		32	110.6					

우리슬리빙

1

1